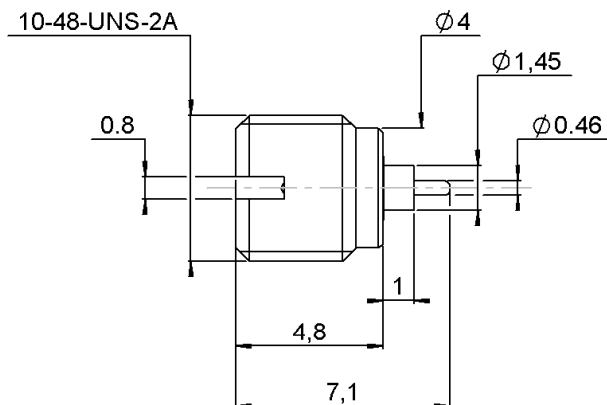
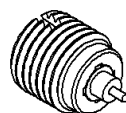


**SCREW-ON MALE RECEPTACLE****LIMITED-DETENT****R222.561.301**

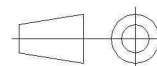
Series : SMP



Scale 1:1



All dimensions are in mm.



COMPONENTS	MATERIALS	PLATINGS (μm)
BODY	STAINLESS STEEL	PASSIVATED .
CENTER CONTACT	BERYLLIUM COPPER	GOLD 1.27 OVER NICKEL 1.27
OUTER CONTACT	-	-
INSULATOR	PTFE	-
GASKET	-	-
OTHERS PARTS	-	-
-	-	-
-	-	-

**Issue : 1202 B**

In the effort to improve our products, we reserve the right to make changes judged to be necessary.

**RADIALL®**

**SCREW-ON MALE RECEPTACLE****LIMITED-DETENT****R222.561.301**

Series : SMP

**PACKAGING**

Standard	Unit	Other
<b>100</b>	<b>'W' option</b>	<b>Contact us</b>

**SPECIFICATION****ELECTRICAL CHARACTERISTICS**

Impedance	<b>50</b>	$\Omega$
Frequency	<b>0-12</b>	GHz
VSWR	<b>1.3 + 0,0000</b>	x F(GHz) Maxi
Insertion loss	<b>0.12</b>	$\sqrt{F}(\text{GHz})$ dB Maxi
RF leakage	- ( <b>NA</b> )	- F(GHz)) dB Maxi
Voltage rating	<b>335</b>	Veff Maxi
Dielectric withstanding voltage	<b>500</b>	Veff mini
Insulation resistance	<b>5000</b>	M $\Omega$ mini

**ENVIRONMENTAL**

Operating temperature	<b>-65/+165</b>	$^{\circ}\text{C}$
Hermetic seal	<b>NA</b>	Atm.cm3/s
Panel leakage	<b>NA</b>	

**OTHERS CHARACTERISTICS**

Assembly instruction

Others :  
Voir page 3 . See page 3**MECHANICAL CHARACTERISTICS**

Center contact retention		
Axial force – Mating end	<b>NA</b>	N mini
Axial force – Opposite end	<b>NA</b>	N mini
Torque	<b>NA</b>	N.cm mini
Recommended torque		
Mating	<b>NA</b>	N.cm
Panel nut	<b>90</b>	N.cm
Mating life	<b>500</b>	Cycles mini
Weight	<b>0,3000</b>	g

Issue : 1202 B

In the effort to improve our products, we reserve the right to make changes judged to be necessary.

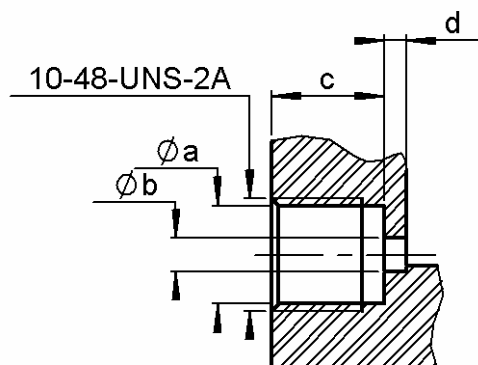


**SCREW-ON MALE RECEPTACLE****LIMITED-DETENT****R222.561.301**

Series : SMP

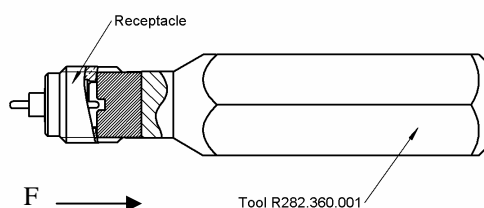
**ADDITIONAL INFORMATION  
MOUNTING AND REPLACEMENT INSTRUCTIONS**

Panel mounting hole

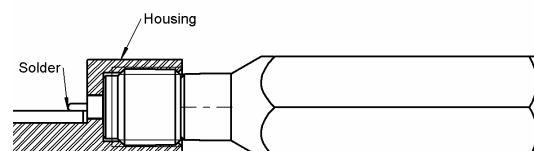


a	4,32
b	1,45 - 1,50
c	4,95
d	1,00

1. Connector must be screwed or unscrewed with adapted torque driver R282.339.001 (recommended coupling torque : 90 Ncm) screw driver : R282.360.001
2. Slide on the connector in F direction until it stops against the tool.



3. Screw the whole into the housing until activation of the torque driver.
4. Withdraw the tool and solder the center contact

**Issue : 1202 B**

In the effort to improve our products, we reserve the right to make changes judged to be necessary.

